

# WORKPLACE SAFETY



- Technical Data Information
- Safety Shower & Eyewash
- Chemical Absorbent Pads
- Powerheart AED
- Pollution Adjustment Blower
- Fire Protective Equipment

## Technical Data Information

### Eyewash / Safety Shower Station Features

#### Shower Head

Emergency Showers that are permanently connected to a source of potable water in a facility which must have a minimum flow rate of 20 (GPM) gallons per minute, which is 75.7 liters and 30 (PSI) pounds per square inch of water supply, that is uninterrupted or for a minimum of 15 minutes.

#### Design and Installation

Eyewash station must spray water from both sides (right-left) at the same time and stay open to leave the hands free.

#### Nozzle of Eye Wash Station

2 side nozzles, always with the cover in place to protect from debris. These protective dust covers should flip off when the flushing fluid is activated.



#### Location

It should be located in an area where a worker will not take longer than 10 seconds to reach the unit. This would mean that it should be located no further than 30 meters. (100 ft.) from the hazard.

#### Flash Valve

Easy to operate and activates in 1 second or less.

CLNS0042

Eyewash & Shower

Page 167

#### Emergency Eye Washer Standard:

##### ANSI Z358.1-2009

1. There should be protective dust covers on the heads to keep them free of debris.
2. The protective dust covers should flip off when the flushing fluid is activated.
3. A gravity fed portable and plumbed eyewash both require flushing of 0.4 (GPM) gallons per minute, which is 1.5 liters, for a full 15 minutes with valves.
4. The water temperature for the flushing fluid must be warm, at least 15°C.
5. The valves must be easily seen and activated in 1 second or less.
6. The switch must be easily seen.
7. It must be designed so that the valves activate or spray water with the hands free.
8. It should be identified by a sign and away from other hazards, such as electricity or sharp edges etc.
9. The way to the unit must be free from obstacles.

#### Safety Shower Station Standard:

##### ANSI Z358.1-2009

1. Emergency Showers that are permanently connected to a source of potable water in a facility must have a flow rate of 20 (GPM) gallons per minute, which is 75.7 liters, and 30 (PSI) pounds per square inch of a water supply that is uninterrupted or for a full 15 minutes.
2. It is easy to operate with the valves activated within 1 second or less.
3. The valves stay open to leave the hands free until they are shut off by the user.
4. There should be a sign and easily seen.
5. It should be located in an area where a worker will not take longer than 10 seconds to reach the unit. This would mean that it should be located no further than 30 meters. (100 ft.) from the hazard. There must not be any obstacles to the station and the immediate area must be well lit.
6. The water temperature for the flushing fluid must be tepid which means somewhere between 15-35°C. In case of chemical burn, the temperature should be 15°C. Information can be obtained from the MSDS sheet relevant to the hazard encountered.



### Safety Shower & Eyewash with Foot Pedal # BD-530

EN 15154-2-2006  
ANSI Z358.1-2009

- Stainless steel construction provides superior protection against corrosion and rust.
- Brass valve provides strength and durability.
- Shower head diameter 10in. and basin diameter 10in.
- ABS Cycloc eye washer nozzle provides durability.
- Water pressure 0.2 MPA- 0.8 MPA
- Hand and foot pedal activation
- Zero velocity apex point provides more comfort and control for effective cleansing of eyes.

Code	Description	UOM	Package
CLNS0042ZZZ	Eyewash & Shower with Foot Pedal # BD-530:	1 set	1 set

### Safety Eyewash with Foot Pedal # BD540C

EN 15154-2-2006ANSI Z358.1-2009

- Stainless steel construction provides superior durability and reliability.
- Brass valve provides strength and durability.
- ABS Cycloc eye washer nozzles provides durability.
- Water pressure 0.2 MPA- 0.6 MPA
- Hand and foot pedals to activate valves
- Zero velocity apex point provides more comfort and control for effective cleansing of eyes.



Code	Description	UOM	Package
CLNS0041ZZZ	Eyewash with Foot Pedal # BD540C:	1 set	1 set



ANSI Z358.1-2009

### Portable Eyewash # BD-600A

EN 15154-2-2006

- Made of Polyethylene and ABS for durability.
- Size: 540mm. x 255mm. x 650mm.
- Light weight: 7kgs. empty
- Suitable for hazardous areas where there is no water supply.
- Capacity: 60 liters
- Water displacement time: 20-25 minutes
- Water pressure 0.2 MPA- 0.6 MPA
- High visibility casing
- Non-Toxic composition in case such as Lead,mercury
- Water expiration: 30 days, Salt water expiration: 120 days
- Free: Emergency sign

Code	Description	UOM	Package
CLNS0043ZZZ	Portable Eyewash # BD-600A:	1 piece	1 piece : box



### Emergency Eyewash Bottle

- For eyewash only
- Ease of use: Open the cover and squeeze water to clear eyes.
- Water expiration: 1 week

Code	Description	UOM	Package
CLNS0006ZZZ	Eyewash #EW-6:	1 bottle	1 bottle

## Technical Data Information

### Haz-Chem and Oil Sorbent Sheet

- Chemical absorbent pads
- Size: 40 x 50 cm.
- Weight: 200 gms.per sqmtr.
- Manufactured from 100% polypropylene
- Capacity: 640 ml./piece
- Odour free & resistant to flame
- Ability to absorb chemicals & oils etc.



CLNS0035ZZZ



CLNS0038ZZZ



CLNS0040ZZZ



### Haz-Chem Sorbent Sheet

- Capacity : 640 ml./ piece

### Universal Sorbent Sheet

- Capacity : 560 ml./ piece

### Oil Sorbent Sheet

- Capacity : 640 ml./ piece

### Haz-Chem and Oil Sorbent Sock

- Chemical Sorbent Sock
- Diameter 7.6 cm.
- Length: 1.2 m.
- Weight: 0.3 kgs./pcs.
- Manufactured from 100% polypropylene
- Odour free and resistant to flame
- Surround the leak creating a barrier zone
- Use Sorbent Sock instead of sand or wood
- Clean and easy to dispose of
- Can be reused to save costs



CLNS0036ZZZ



CLNS0037ZZZ



CLNS0039ZZZ



### Haz-Chem Sorbent Sock

- Capacity : 5,600 ml./piece

### Universal Sorbent Sock

- Capacity : 4,900 ml./ piece

### Oil Sorbent Sock

- Capacity : 5,600 ml./ piece

Code	Description	Color	UOM	Package
CLNS0035ZZZ	Haz-Chem Sorbent Sheet	Yellow	1 Pack	50 pieces: 1 Pack
CLNS0038ZZZ	Universal Sorbent Sheet	Grey	1 Pack	50 pieces: 1 Pack
CLNS0040ZZZ	Oil Sorbent Sheet	White	1 Pack	50 pieces: 1 Pack

Code	Description	Color	UOM	Package
CLNS0036ZZZ	Haz-Chem Sorbent Sock	Yellow	1 Pack	4 pieces: 1 Pack
CLNS0037ZZZ	Universal Sorbent Sock	Grey	1 Pack	4 pieces: 1 Pack
CLNS0039ZZZ	Oil Sorbent Sock	White	1 Pack	4 pieces: 1 Pack





### POWERHEART AED G3 PLUS

- The RescueCoach™ voice prompts and metronome guide you through a very stressful rescue situation
- The device knows when to (and when not to) deliver the shock
- The text screen lends extra help in noisy and chaotic environments
- Easy to use, it self-tests daily to ensure it works when you need it
- **Made in USA**
- Suitable for Work places ,Transportation, Sporting venues, Schools, Retail & hotels, Recreation facilities,Places of worship, Any public place

Details	Cardiac Science AED G3 Plus
Ready to use	✓
Visible indicator	✓
CPR prompts	✓
RescueCoach™ voice prompts and metronome guide in Thai	✓
Screen	Text (Displays rescue prompts to guide user through rescue process)
Automatic self-test	✓ (Daily ,Weekly,Monthly)
Battery Life	✓
the shock (times)	290 times
Allowable Energy Range (J)	5 - 351 J
Electric charging	< 4 S
Save data	60 minutes ECG
Warranty (defibrillator)	7 years
Warranty (Battery)	4 years
Type of Battery	IntelliSense® lithium battery
Shelf Life (Battery)	2 Years
Weight	3.1 kg

Code	Description	UOM	Package
AED - G3PLUS	AED Powerheart G3 Plus	1 Piece	1 Piece

## Pollution Adjustment Blower

### Pollution adjustment Blower, intrinsically safe

- High Quality and durable drum
- Overload breaker
- Air Circulation of heat, smoke or vapor
- Eliminates odours, smoke and dust
- Flexible Air-Duct
- Suspension System: reduces noise
- Light weight and portable
- Small space requirement
- Ventilation in small space area
- Reduce heat in production
- Intrinsically safe

### Intrinsically safe Boubaku Mama

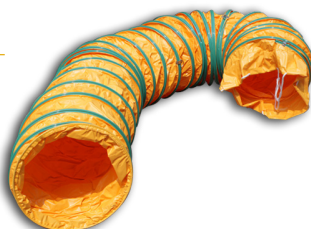
- Power: 70m<sup>3</sup>/minute
- Pressure: 30mmAq
- Motor: NON-SPARKING TYPE, 550W. (2/3 HP)
- Weight: 20 kgs.



Code	Description	UOM	Package
CLNS0012ZZZ	Boubaku Mama Fan Dia 300 mm.	1 piece	1 piece

### Flexible Duct

- Made of PVC& Fiber Glass, Tear resistant and durable.
- Heat Resistant up to 70 °C,
- Space saving and easy to maintain.



Code	Description	UOM	Package
CLNS0045ZZZ	Win Mama Duct 300 mm.	1 piece	1 piece
CLNS0014ZZZ	Boubaku Mama Duct	1 piece	1 piece

### Win Mama





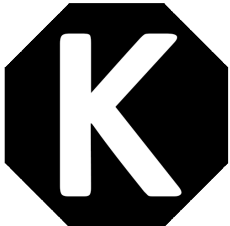
- Power: 70m<sup>3</sup>/minute
- Pressure: 30mmAq
- Motor: AXIAL TYPE, 550W. (2/3 HP)
- Weight: 18 kgs.



Code	Description	UOM	Package
CLNS0044ZZZ	Win Mama Dia 300 m.	1 piece	1 piece

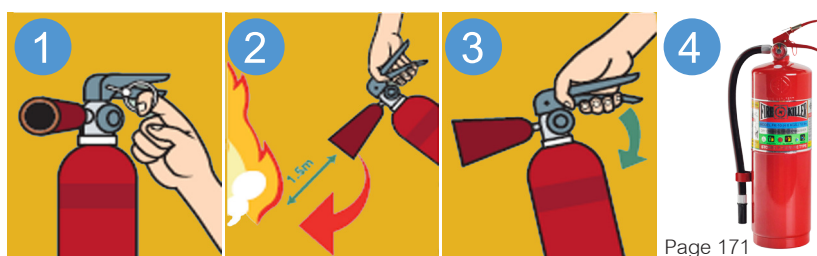
## Fire Extinguishers

### Symbols and Meaning

Symbols	Definitions	Extinguishing Methods
	<b>A Type</b> Ordinary Materials: Wood, Paper, Fabric, Garbage	<b>Method A</b> Water
	<b>B Type</b> Flammable Liquids: Grease, Gasoline Oil, Alcohol	<b>Method B</b> Form, Chemical powder, CO2
	<b>C Type</b> Appliance, Electrical equipment	<b>Method C</b> CO2, Liquid or Vapor chemical
	<b>D Type</b> Metals: Aluminum, Magnesium, Sodium	<b>Method D</b> Sodium Collide or Graphite powder
	<b>K Type</b> Cooking oils: Fats, Grease, and oils	<b>Method K</b> CO2, Extinguishing K Type

Fire Extinguisher Types	Descriptions
Dry Chemical Powder	Extinguish all kinds of fuel: wood, paper, fabric, plastic, electrical cause, Gas,Oils, or Flammable materials: Class A, B, C
Clean Agent (Halotron)	Flammable Oil and electrical cause. No conductor of electricity, no contain of CFC, Class: A, B, C, K
CO2	Suitable for electrical cause, kitchen, workshop, office. Class: B, C

### How to use a Fire Extinguisher



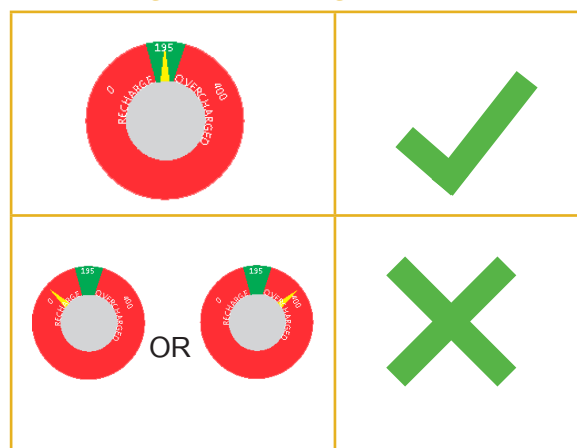
1. Twist and pull the safety pin from the handle.
2. Aim the extinguisher nozzle or hose at the base of the fire.
3. Squeeze the handle or lever slowly to discharge the agent.
4. Sweep side to side approximately 6 inches over the fire until expended.

Page 171

## Maintenance & Testing Fire Extinguishers

1. Check the pressure: Ensure that the gauge's needle indicates that the pressure is in the proper operating range. Most of the time, the correct pressure will be marked in green on the gauge.
2. Check the hose and nozzle.
3. Capacity confirmed by weighing or lifting.
4. Fire Extinguishers should not be distorted, swollen or corroded.
5. Shelf Life: Red Extinguishers: 5 years, Green Extinguishers (Halotron) & Gas CO2: 10 years.
6. Chemical powder or red extinguishers shall be refilled after use.

## Fire Extinguishers Gauge



BS5045

## CO2 Fire Extinguisher

- Chemical powder CO2
- Places: Electrical, kitchen, workshop and office
- Decrease heat and avoid oxygen.
- Class B and C

Code	Description	ขนาด	Size	UOM	Package
AFIR0016ZZZZZ	CO2 Extinguisher	10 lbs.	Red	1 Drum	1 Drum
AFIR0017ZZZZZ	CO2 Extinguisher	15 lbs.	Red	1 Drum	1 Drum



## Anti-Fire Equipment

## Dry Chemical or Chemical Powder Fire Extinguisher

- Long service life
- Easy to use: pull the safety pin and squeeze trigger
- All fire types
- Eco friendly
- Places: office, factory & indoors etc.
- Durable and efficient
- High quality drum
- Class: A, B, or C

Code	Description	Size	Color	UOM	Package
AFIR0018ZZZZZ	Powder Extinguisher	2.2 lbs.	Red	1 Drum	1 Drum
AFIR0019ZZZZZ	Powder Extinguisher	5 lbs.	Red	1 Drum	1 Drum
AFIR0020ZZZZZ	Powder Extinguisher	10 lbs.	Red	1 Drum	1 Drum
AFIR0021ZZZZZ	Powder Extinguisher	15 lbs.	Red	1 Drum	1 Drum
AFIR0022ZZZZZ	Powder Extinguisher	20 lbs.	Red	1 Drum	1 Drum



## Clean Agent Fire Extinguisher

BS5045

- Chemical Liquid
- Fires: Flammable oils and electrical
- Does not conduct electricity
- Clean and Eco-friendly
- Class: A, B, or C

Code	Description	Size	Color	UOM	Package
AFIR0014ZZZZZ	CLEAN AGENT (HALOTRION)	10 lbs.	Green	1 Drum	1 Drum
AFIR0015ZZZZZ	CLEAN AGENT (HALOTRION)	15 lbs.	Green	1 Drum	1 Drum

## Firefighter Equipment

### Anti-Fire Equipment



#### Fiberglass Fireman's Helmet

- Fiber Glass 1-Middle Line Helmet
- Strong Impact resistance
- Floating adjustable harness
- Webbing Chinstrap

Code	Description	Color	UOM	Package
AFIR0006ZZZZ	Fireman's Helmet	Black	1 piece	1 piece



#### Firefighter Suit

- Long sleeve, Jean and cotton Fabric: Good Ventilation
- Length 90 cm.
- Button: Hook
- High visibility stripe

Code	Description	Color	UOM	Package
AFIR0002ZZZZ	Firefighter Suit	Orange	1 Suit	1 Suit



#### Instantaneous Branch Pipe and Jet Nozzle

- Simple installation
- British Standard
- Material: Brass

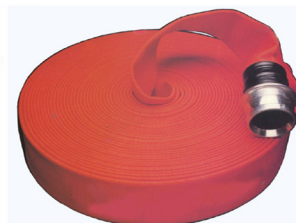
Code	Description	Size	UOM	Package
AFIR0030ZZZZ	Nozzle # 2.5*12"	2.5 x 12 inches	1 Piece	1 Piece



#### Fireman's Boots

- Half Calf Rubber Anti-Fire Boots
- Manufactured from flameproof Rubber.
- Flannel Fabric Lining.
- Steel toe cap& midsole

Code	Description	Size	Color	UOM	Package
AFIR0008ZZ41	Anti-Fire Boots	41	Black/ Yellow	1 pair	1 pair
AFIR0008ZZ42	Anti-Fire Boots	42	Black/ Yellow	1 pair	1 pair
AFIR0008ZZ43	Anti-Fire Boots	43	Black/ Yellow	1 pair	1 pair
AFIR0008ZZ44	Anti-Fire Boots	44	Black/ Yellow	1 pair	1 pair



#### FIRE HOSE

BS.6391 Type2

- 100% polyester
- High quality Inner Rubber coated
- White Hose: Polyester mixed with synthetic elastomers
- High Pull Resistance
- Moist and fungus protection.
- Flexible
- Explosive-proof: 47 kg./cm<sup>2</sup> (680 Psi)
- Pressure test: 21 kg./cm<sup>2</sup> (300 Psi)
- Maximum pressure: 17 kg./cm<sup>2</sup> (250 Psi)

Code	Description	UOM	Color	UOM	Package
AFIR0026ZZZZ	Fire Hose: White 1.5"	20 m.	White	1 roll	20 m.
AFIR0029ZZZZ	Fire Hose: White 2.5"	30 m.	White	1 roll	30 m.
AFIR0027ZZZZ	Fire Hose: Red 1.5"	20 m.	Red	1 roll	20 m.
AFIR0028ZZZZ	Fire Hose: Red 2.5"	30 m.	Red	1 roll	30 m.